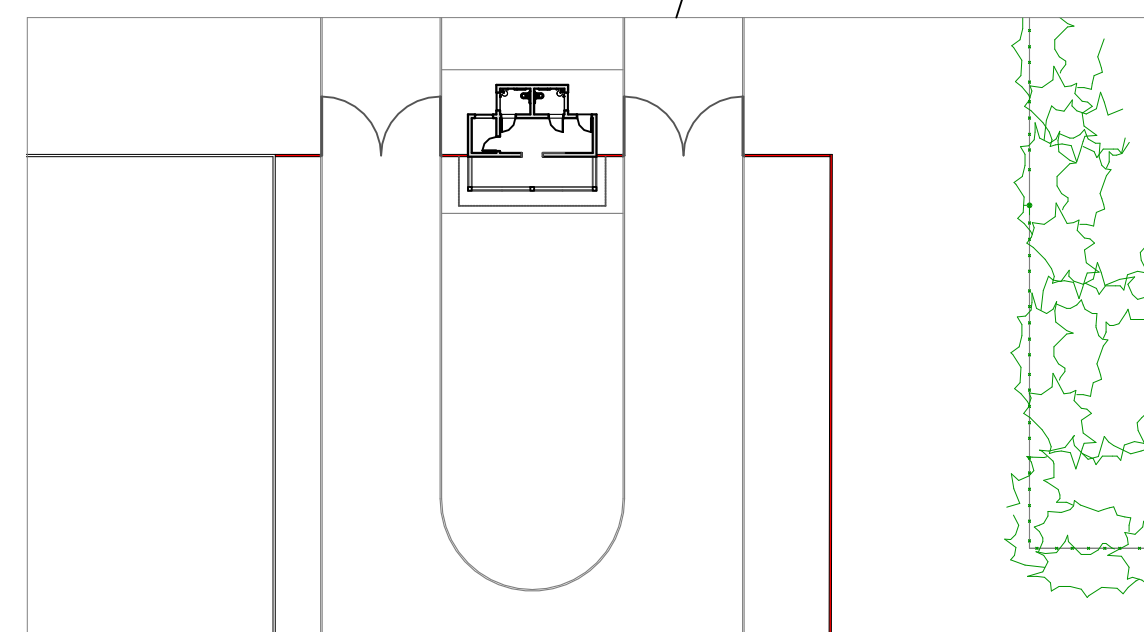
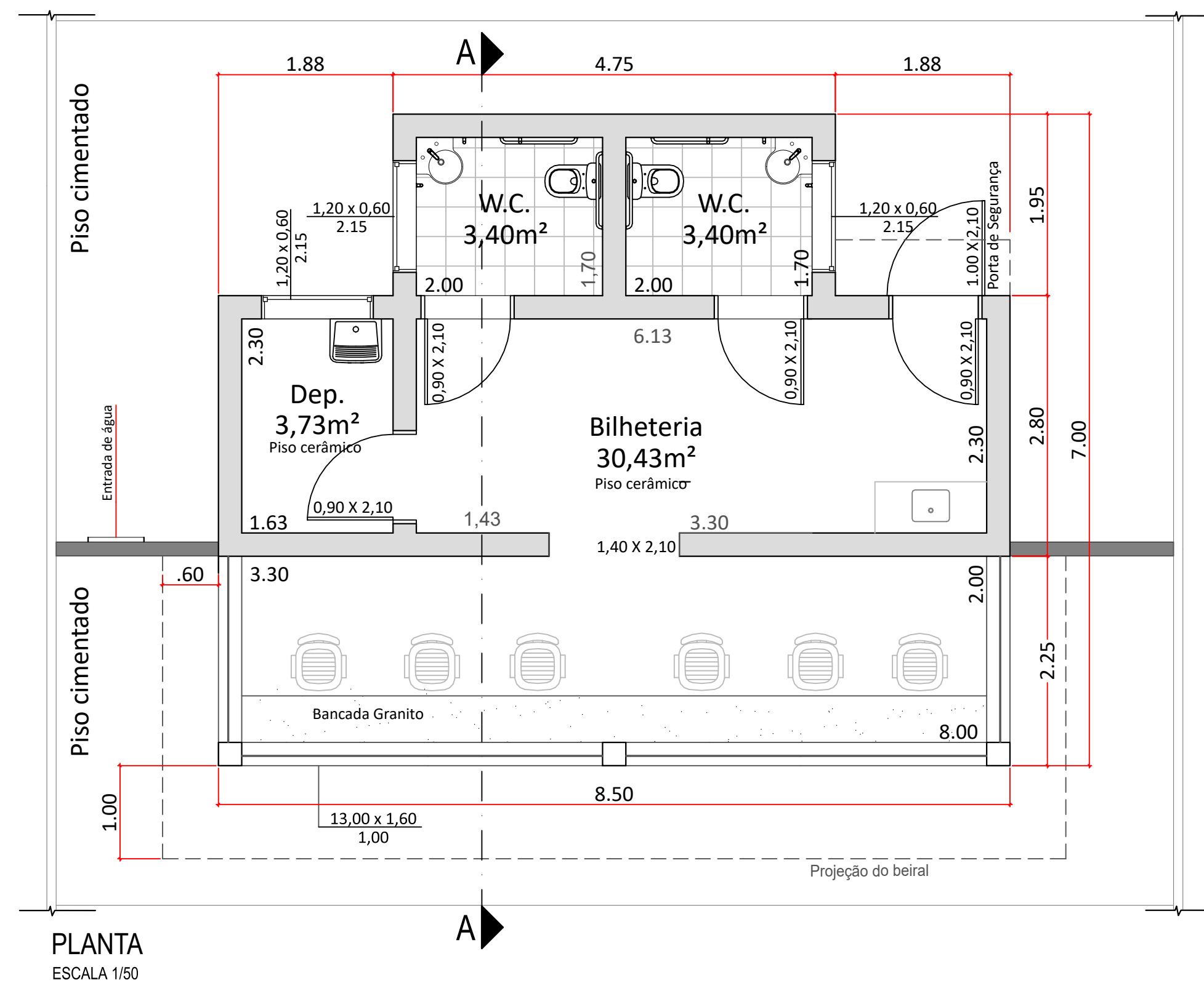


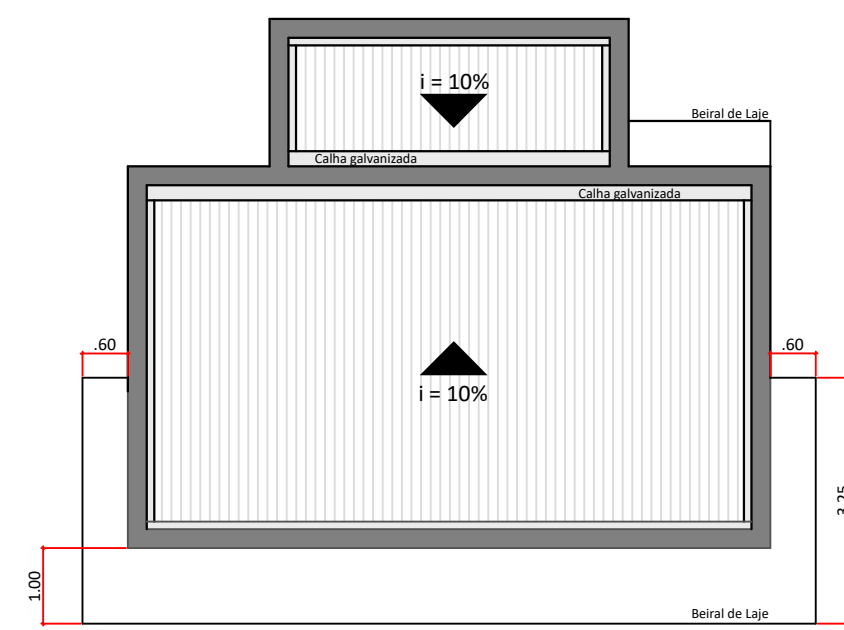
LOCALIZAÇÃO SEM ESCALA



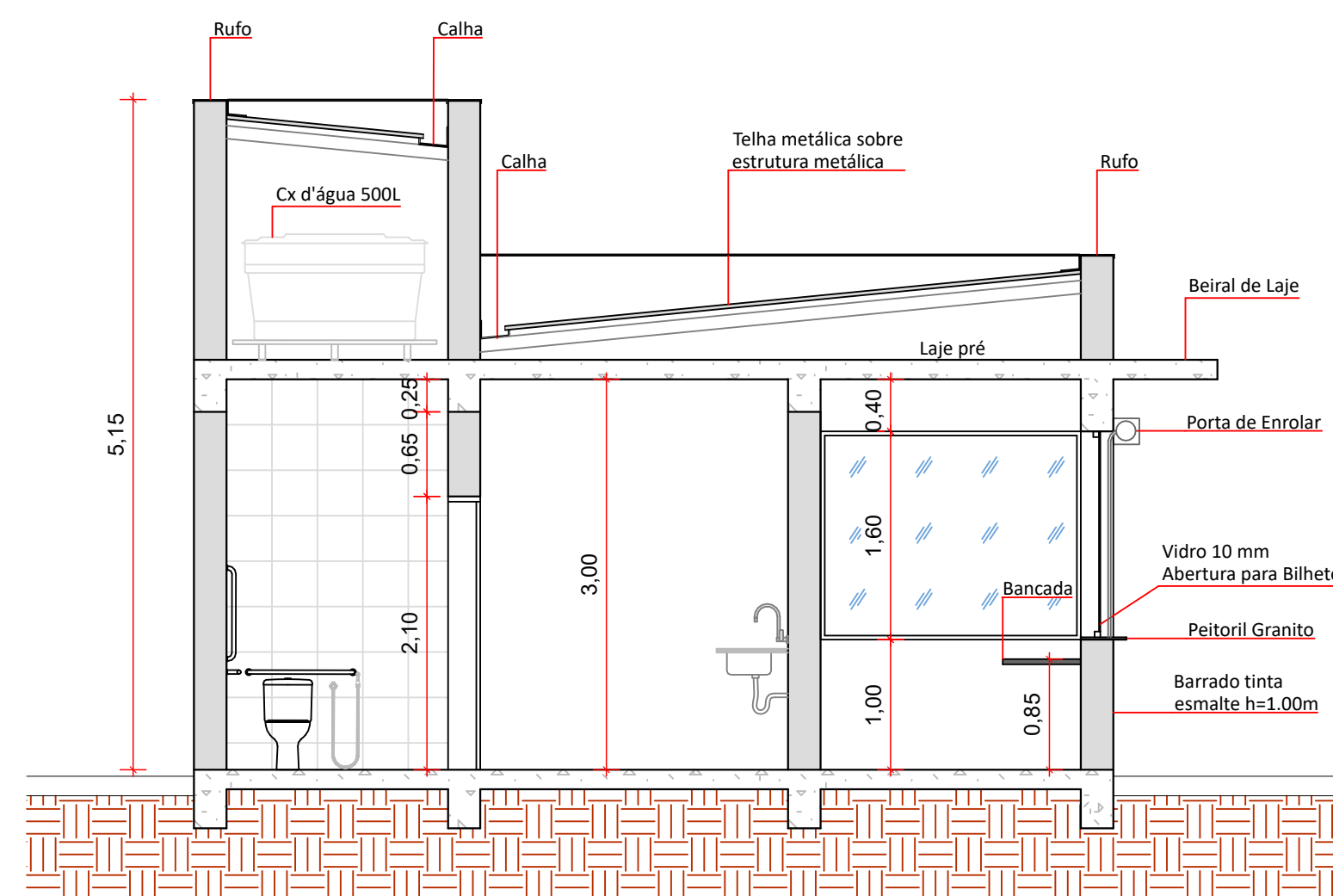
IMPLANTAÇÃO ESCALA 1/500



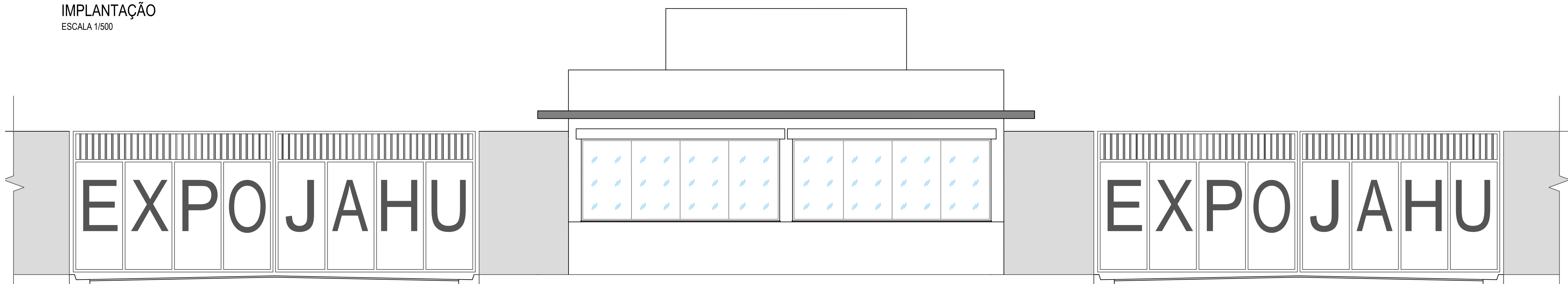
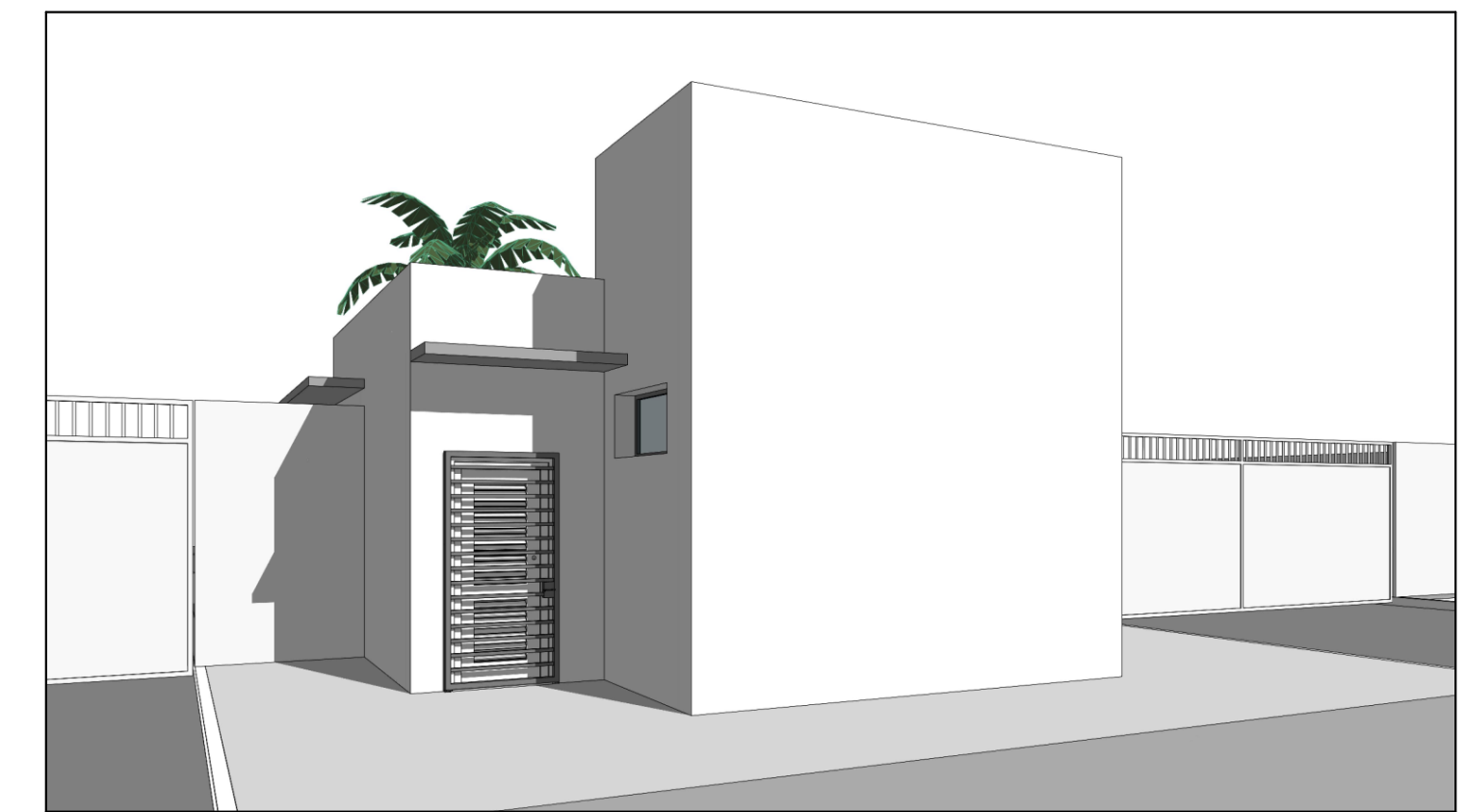
PLANTA ESCALA 1/50



COBERTURA ESCALA 1/100



CORTE - AA ESCALA 1/50



ELEVÇÃO FRONTAL ESCALA 1/50



PREFEITURA DO MUNICÍPIO DE JAHU

SECRETARIA DE HABITAÇÃO E PLANEJAMENTO URBANÍSTICO

Obra: BILHETERIA - EXPO JAU

Local: AVENIDA PREFEITO DR. ALFEU FABRIS
JARDIM PADRE AUGUSTO SANI - JAÚ-SP

Referência: PLANTA - CORTE - IMPLANTAÇÃO - PERSPECTIVAS

NORBERTO LEONELLI NETO
SECRETARIO DE HABITAÇÃO E PLANEJAMENTO URBANÍSTICO

EDMAR BESSI COLAFATI
ARQUITETO E URBANISTA